

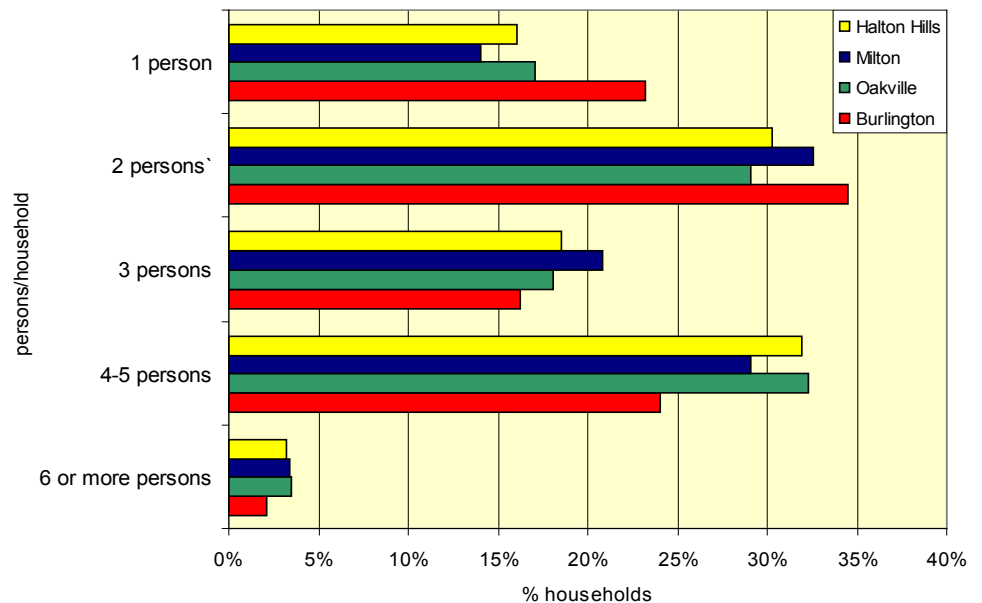
## Households and Household Size

The size of household is changing as a result of changing demographics and living arrangements. Changing household size can have significant implications on housing needs in a community. As in Canada overall, the downward trend towards smaller households continues as fewer children are born, more couples separate and more individuals live alone.

In 1991, the dominant household size in Halton was 4 to 5 persons constituting a typical family with two parents and two or more children. In 2006, the two person household overtook the 4-5 person household as the dominant household type. This represents 32% of all households in the Region of Halton.

Another significant change is the rapid growth of one person households. Between 1991 and 2006, the one person household has increased by 83% outpacing all the other household sizes. About one in five (19%) households has only one person.

**Household size by municipality, Region of Halton, 2006**



Source: Statistics Canada, 2006 Census

The distribution of the size of household also varies among the four municipalities. For example, although both Burlington and Oakville have similar populations, household size composition in the two communities is quite different.

Over one-third (34%) of the households in Burlington were two person households. However, contradicting the overall Halton trend, the dominant group in Oakville was the 4-5 person household which represents 32% of the total. Burlington also had the highest proportion of one person households. In fact, almost half (49%) of all one person households in Halton were located in Burlington.

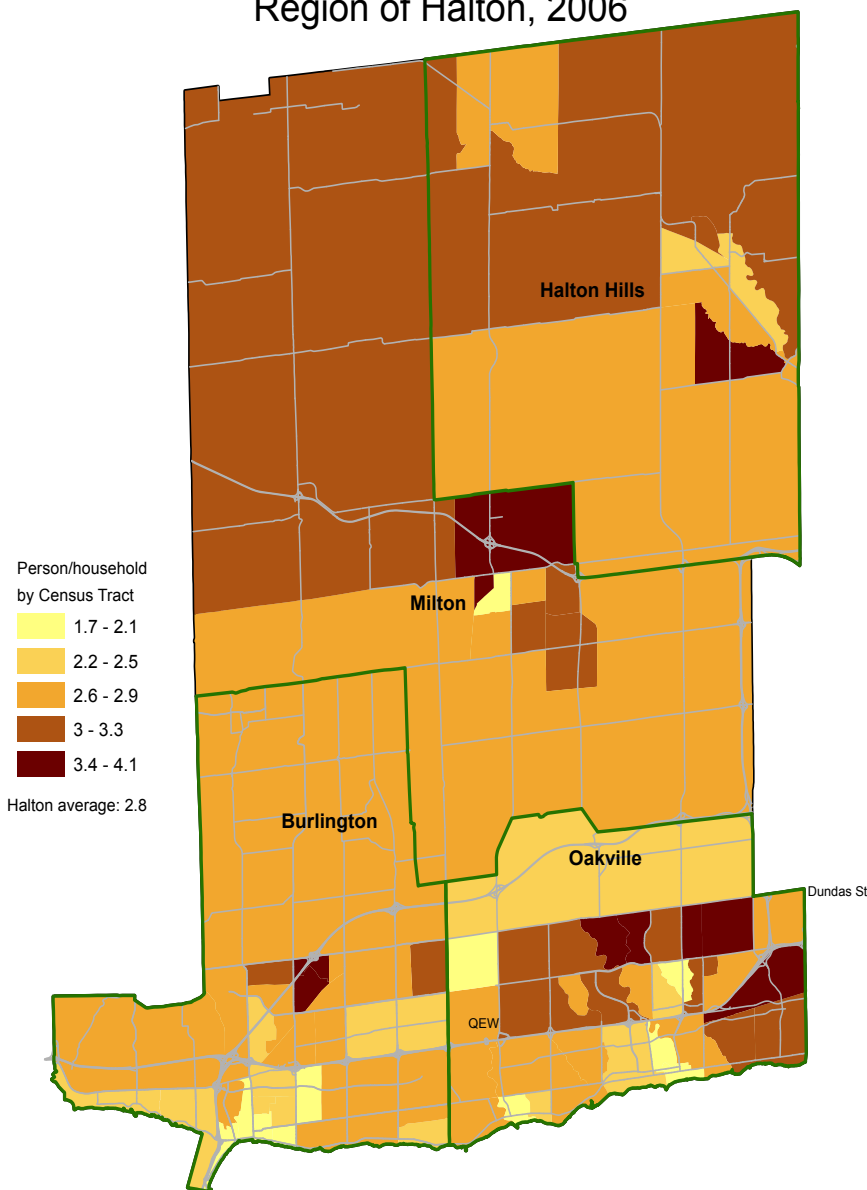
In Halton Hills, the dominant household size was also the 4-5 person household as in Oakville. On the other hand, in Milton its dominant 4-5 person household type was replaced by 2 person households. This change is most likely the result of the significant population growth fuelled by young families with fewer children.

## Average Household Size

The average household size in Halton dropped from 2.94 to 2.79 persons. The increase in the number of households has outpaced the population increase. However, Halton's average is still higher than the provincial average of 2.6 persons per household.

The map portrays a more detailed geographic distribution of the average household size by census tract. A census tract as established by Statistics Canada is a relatively permanent area with a population range of 2,500 to 8,000 and the greatest possible social and economic homogeneity.

### Average Household Size Region of Halton, 2006



In Oakville, the majority of the areas (census tracts) with household size above the regional average (2.79 persons) are located between Dundas Street and the Queen Elizabeth Way (QEW).

Census tracts located closer to the inner city core had smaller households reflecting the concentration of individuals living alone and families with fewer children.

In the rural parts of the region, there are still many larger households which keep the average household size above the regional average.

Source: Statistics Canada, 2006 Census, DMTI Spatial

© 2008 Community Development Halton, all rights reserved.