

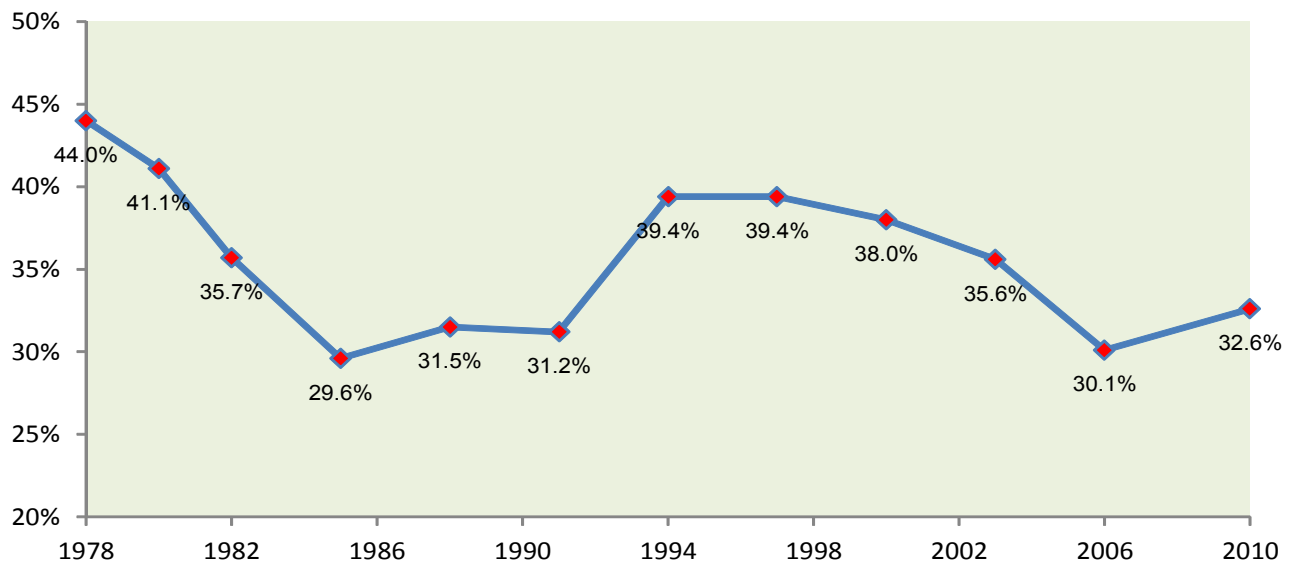
Voter Turnout – Town of Milton 2010 Municipal Election

Voter turnout in elections is often used as a measure of citizen’s engagement and interest in the political process. In the past few decades, we are witnessing a declining trend in voter turnout at the federal, provincial and municipal elections. In general, the municipal election has the lowest turnout rate. Efforts are being made to engage more citizens to exercise their rights and responsibilities to vote.



In the municipal election held October 25, 2010, the Town of Milton recorded a turnout rate of 32.6%. Although it is 2.5% higher than the previous election in 2006, it is lower than the rates recorded in many of the past elections. The turnout rates also vary geographically within the community.

Voter Turnout, Municipal Election Town of Milton (1978-2010)



Source: Town of Milton

In the 2010 election, the Town was divided into 23 polling subdivisions. The number of registered voters in the polling subdivisions usually ranged from 1,000 to 4,000 persons with the exception of three subdivisions. They are unique voting locations which include a senior apartment, a nursing home and a hospital.

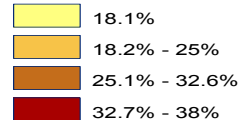
The voter turnout rates (number of ballot cast/number of registered voters) ranged from 18% to 38%. The rate at the polling subdivision excludes advanced polls which represent about 4% of the ballots cast.

Polling subdivisions located in the newer part of town recorded lower turnout rates than those in the established areas. The lowest voter turnout rate (18.1%) was recorded in subdivision #502 (A). Less than one in five eligible electors casts a vote.

On the other hand, polling subdivisions located in and close to the downtown area recorded turnout rates above the town's average of 32.6%. The highest rate (38.4%) was recorded in subdivision # 201 (B), in which over one-third of the electors voted.

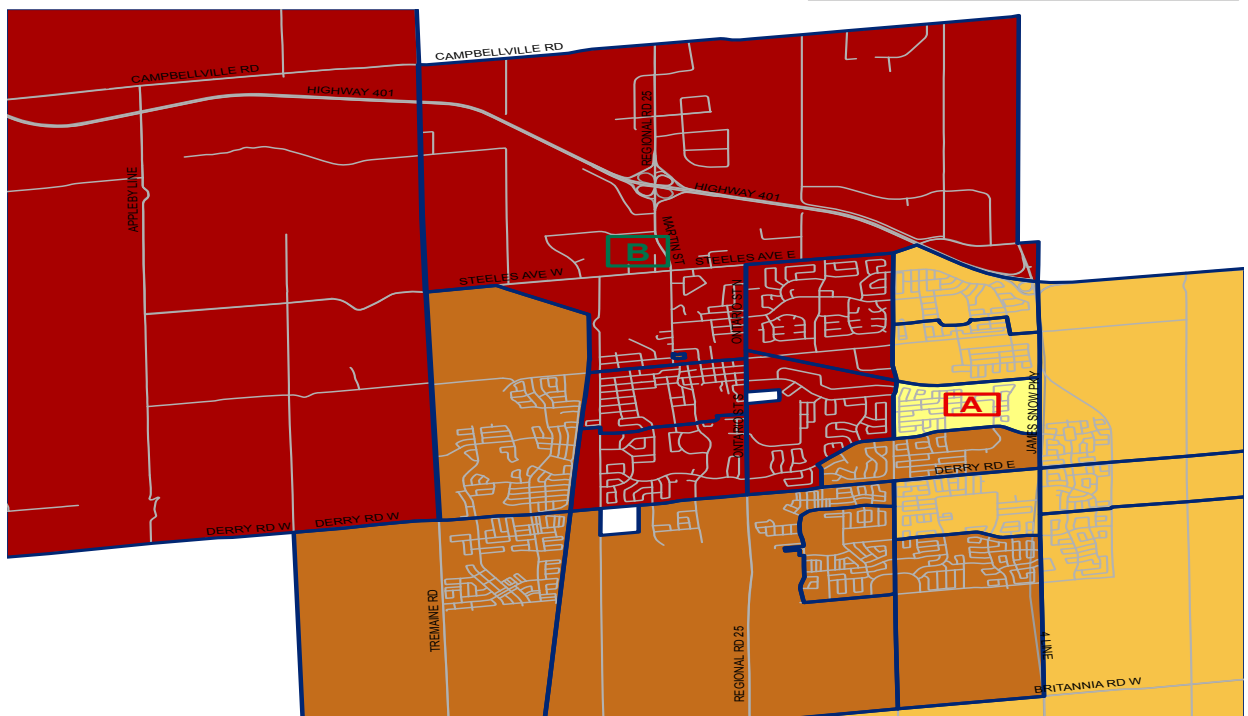
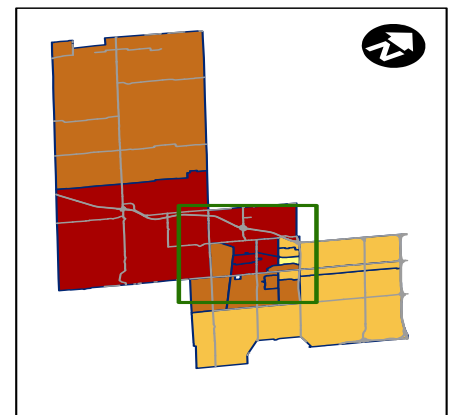
Voter turnout, 2010 Municipal Election, Town of Milton, Ontario

Voter turnout rate by polling subdivision



unique voting location

Note: data displayed do not include advance polls



Source: Region of Halton, Town of Milton

© 2010 Community Development Halton, all rights reserved



Community Development Halton
860 Harrington Court
Burlington, ON L7N 3N4
905-632-1975

www.cdhalton.ca