

## Children in Low Income Families

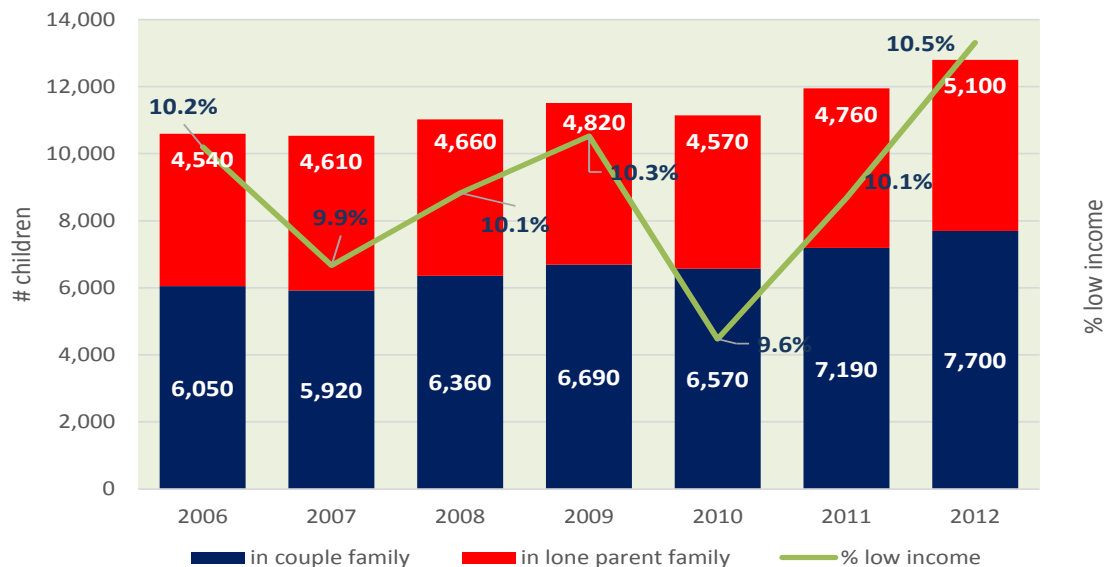
November 2014 marks the 25th anniversary of the unanimous, federal all-party resolution to end child poverty by the year 2000. Over 1.3 million children in Canada and 555,000 in Ontario live in poverty today. Poverty continues to rob children and adults of their dignity and potential, so we need to fix the problem of poverty to ensure real progress, for real people, now.<sup>1</sup>



As described in Community Lens #99, the After-Tax Low Income Measure (LIM-AT) is used to measure low income. Based on the taxfiler data for 2012, there were almost 12,800 children (0-17 years) living in low income families in Halton Region representing about 10.5% of all children. Although this percentage fares better than the national (19%) and provincial (20%) averages, over one in ten children lives in low income in Halton.

Even though couple families with the potential of two wage earners are likely to have more financial resources than single parent families, there is a higher proportion (60%) of children living in low income couple families. Between 2006 and 2012, the number of children living in low income families has increased by over 20%. Those living in couple families experienced an increase of 27% compared to about 12% for those living with single parents.

### Children in Low Income Families Halton Region, 2006-2012

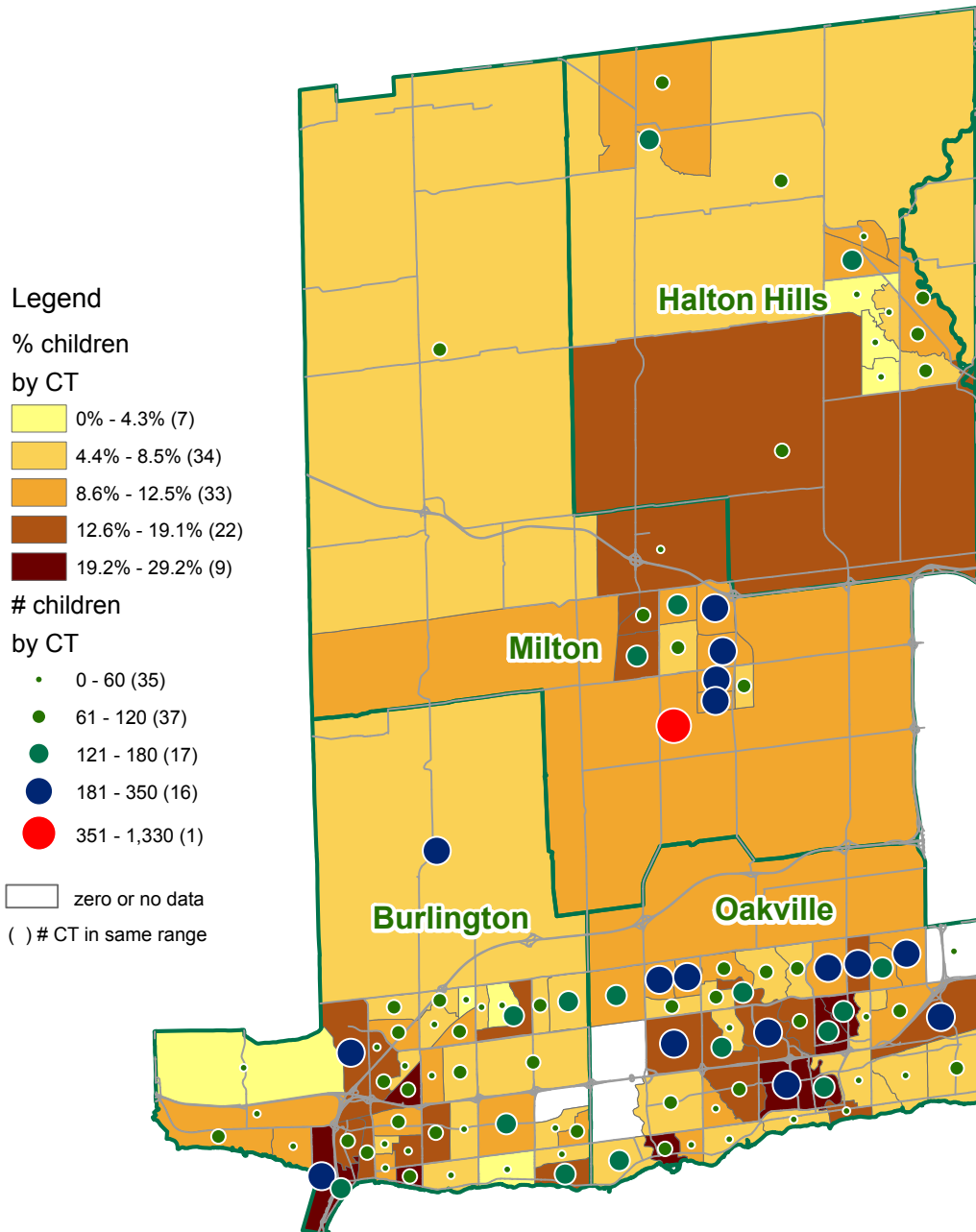


Source: Statistics Canada, Taxfiler data 2006-2012

<sup>1</sup> Campaign 2000, 2014 Report on Child and Family Poverty in Ontario, 2. Community Development Halton is a partner in Campaign 2000, a cross-Canada public education movement to build Canadian awareness and support for the 1989 all-party House of Commons resolution to end child poverty in Canada by the year 2000.

The map shows the geographic distribution of low income children by Census Tract (neighbourhood). There are nine census tracts (shaded in dark brown) with 20% or more of children in low income families. Five of those neighbourhoods are located in the Town of Oakville and four are in the City of Burlington. One in five of these children live in low income.

## Children (0-17 years) in Low Income Families by Census Tract, Halton Region, 2012



Source: Statistics Canada, Taxfiler data 2012

© 2014 Community Development Halton, all rights reserved.

United Way Funded Agency



Community Development Halton would like to acknowledge the ongoing financial support of the Regional Municipality of Halton.



Community Development Halton  
860 Harrington Court  
Burlington, ON L7N 3N4  
905-632-1975

[www.cdhalton.ca](http://www.cdhalton.ca)