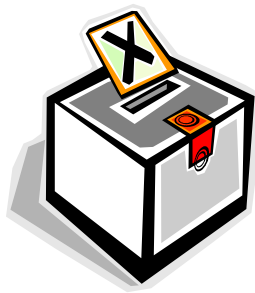


Voter Turnout – 2008 Federal Election: Burlington & Oakville



Voting in a government election is an indication of citizens' interest and engagement in our political process. Canadians are more engaged in federal elections than provincial/territorial and municipal elections.

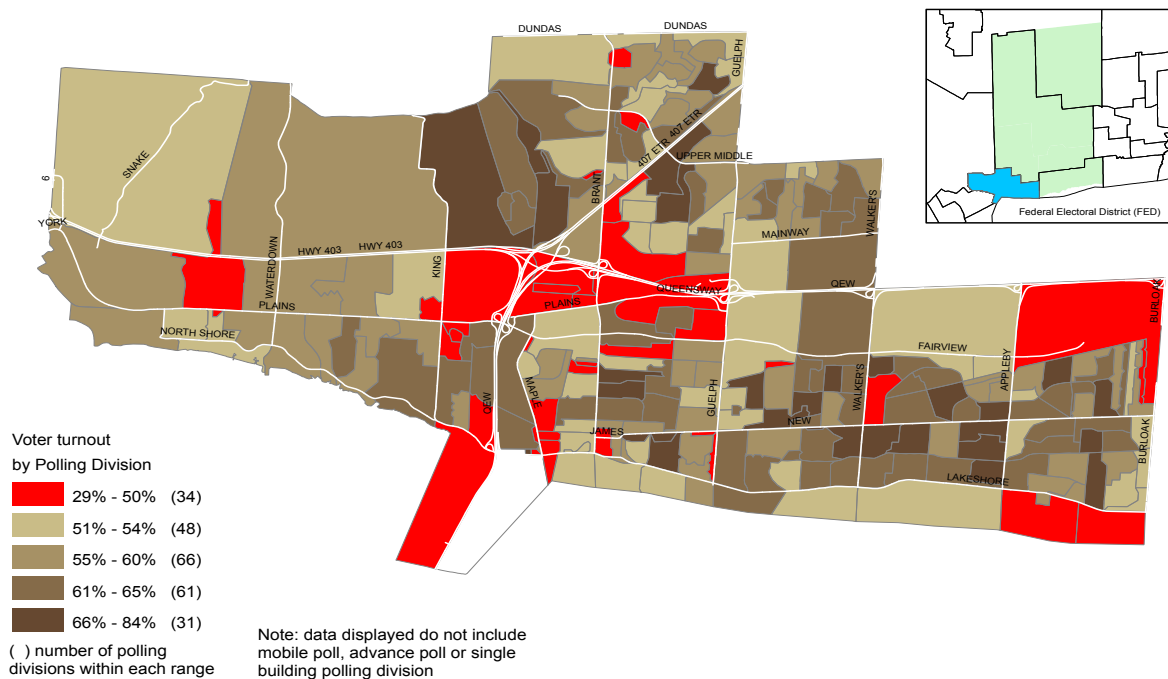
The last federal election was held on October 14, 2008. The national voter turnout rate was 58.8% compared to 64.7% of the previous election held on January 23, 2006.

As reported in Community Lens 15-18, there are four Federal Electoral Districts¹ (FEDs) in Halton Region. The decrease in voter turnout is also evident in the four FEDs.

Burlington Federal Electoral District (FED)

The voter turnout for Burlington was 64.9% compared to 73% in the 2006 federal election. About 15% of the Polling Divisions (PD) recorded voter turnout rate of 50% or less; i.e., only half of the eligible voters cast their ballots. There are almost three times more PDs with rate below 50% than in 2006. One PD has the lowest turnout rate at 29%.

Voter Turnout, 2008 Federal Election Burlington FED



Source: Elections Canada

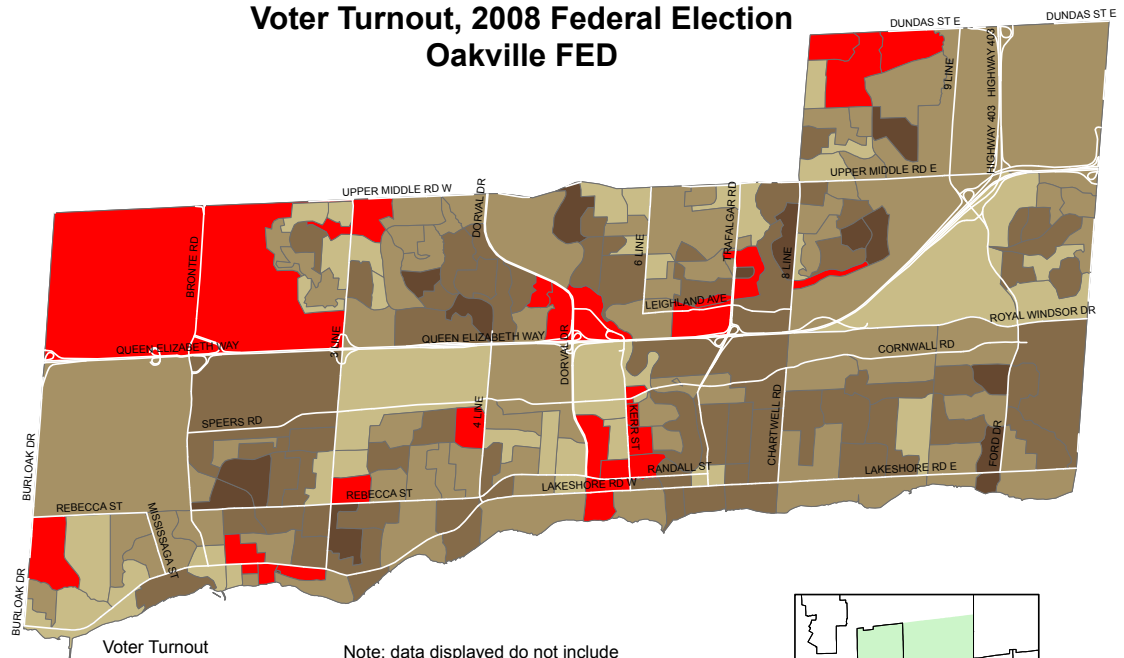
© 2011 Community Development Halton, all rights reserved.

¹ There is an average of 200 Polling Divisions (PD) in each FED. Each PD has an average of 375 electors.

Oakville Federal Electoral District (FED)

The voter turnout for Oakville was 66.3%, the highest among the four FEDs in Halton. It is six percentage points lower than that in the 2006 election. About 13% of the Polling Divisions (PD) recorded voter turnout rate of 50% or less; i.e., only half of the eligible voters cast their ballots. There are three times more PDs with rate below 50% than in 2006. One PD has the lowest turnout rate at 29%.

Voter Turnout, 2008 Federal Election Oakville FED

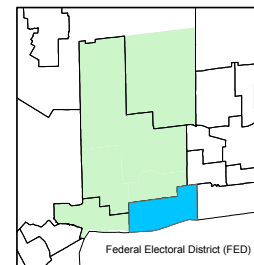


Voter Turnout
by Polling Division

29% - 50%	(26)
51% - 55%	(36)
56% - 60%	(66)
61% - 66%	(62)
67% - 78%	(14)

() number of polling divisions within each range

Note: data displayed do not include mobile poll, advance poll or single building polling division



Source: Elections Canada

© 2011 Community Development Halton, all rights reserved



A United Way Agency



Community Development Halton
860 Harrington Court
Burlington, ON L7N 3N4
905-632-1975

www.cdhalton.ca