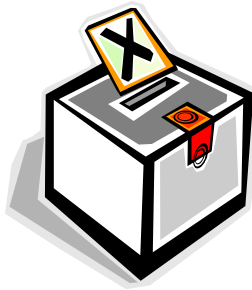


Voter Turnout – 2008 Federal Election: Halton Hills

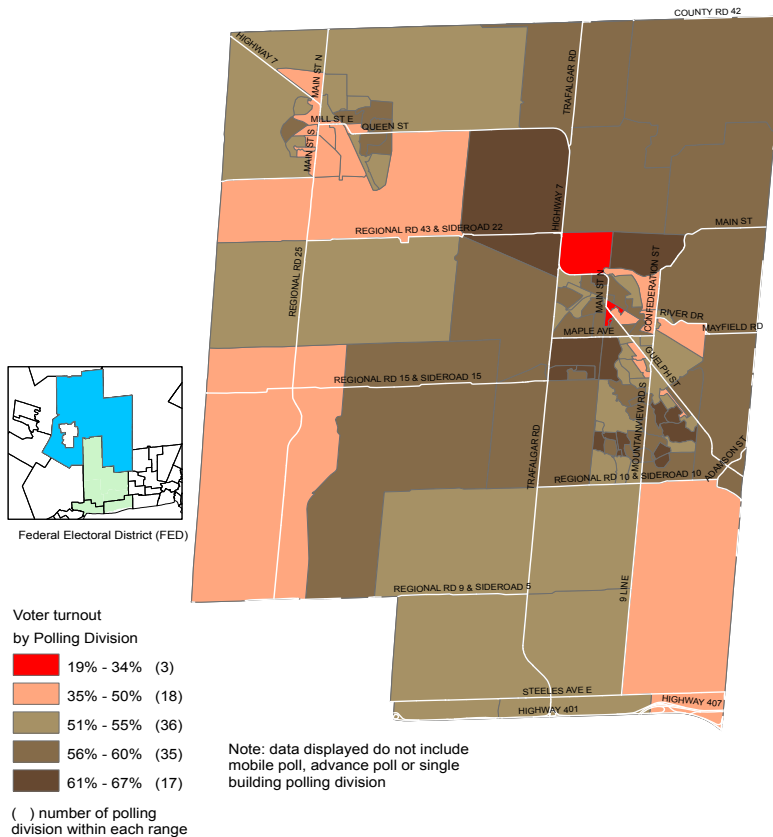


Voting in a government election is an indication of citizens' interest and engagement in our political process. Canadians are more engaged in federal elections than provincial/territorial and municipal elections.

The last federal election was held on October 14, 2008. The national voter turnout rate was 58.8% compared to 64.7% of the previous election held on January 23, 2006.

As reported in Community Lens 15-18, there are four Federal Electoral Districts¹ (FEDs) in Halton Region. The decrease in voter turnout is also evident in the four FEDs.

Voter Turnout, 2008 Federal Election Wellington-Halton Hills FED (part of)



Wellington-Halton Hills Federal Electoral District (FED)

The Town of Halton Hills is part of the Wellington-Halton Hills FED. There are over 100 PDs in Halton Hills. The voter turnout rate was about 54%, the lowest among the four FEDs in Halton. It is also fourteen percentage points lower than that of the 2006 election. The three PDs with the lowest turnout rate are located in Georgetown.

Source: Elections Canada

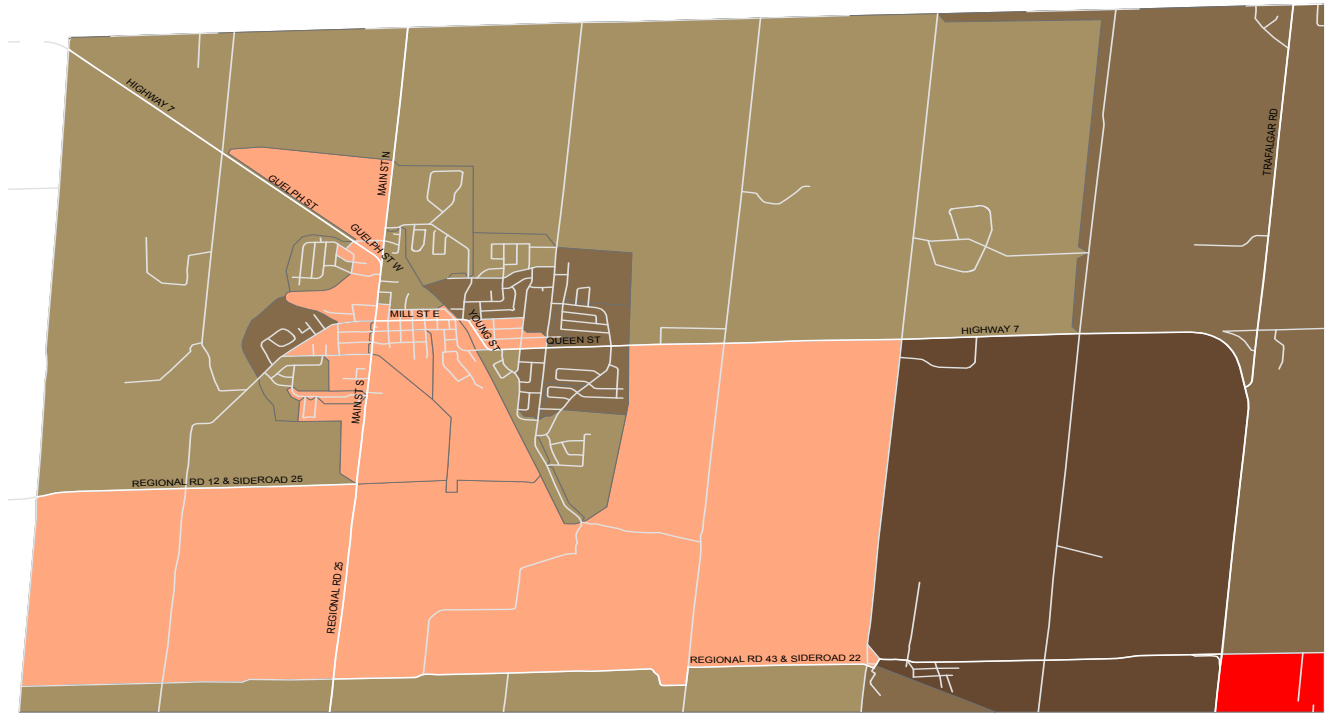
© 2011 Community Development Halton, all rights reserved

¹ There is an average of 200 Polling Divisions (PD) in each FED. Each PD has an average of 375 electors.

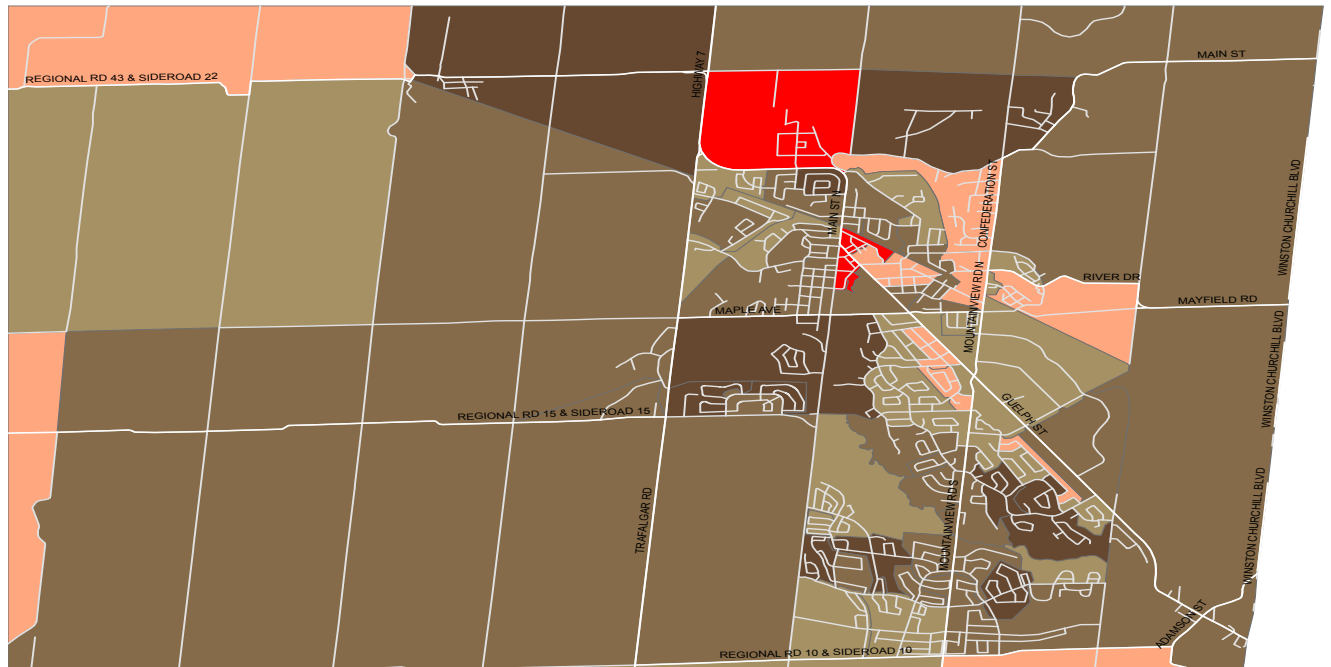
Community Lens is prepared by Community Development Halton to disseminate and interpret important community data as it becomes available. For more information please contact us at data@cdhalton.ca or 905-632-1975

Acton & Georgetown Voter Turnout

Voter Turnout, 2008 Federal Election Acton, Halton Hills



Voter Turnout, 2008 Federal Election Georgetown, Halton Hills



Community Development Halton
860 Harrington Court
Burlington, ON L7N 3N4
905-632-1975

www.cdhalton.ca

