

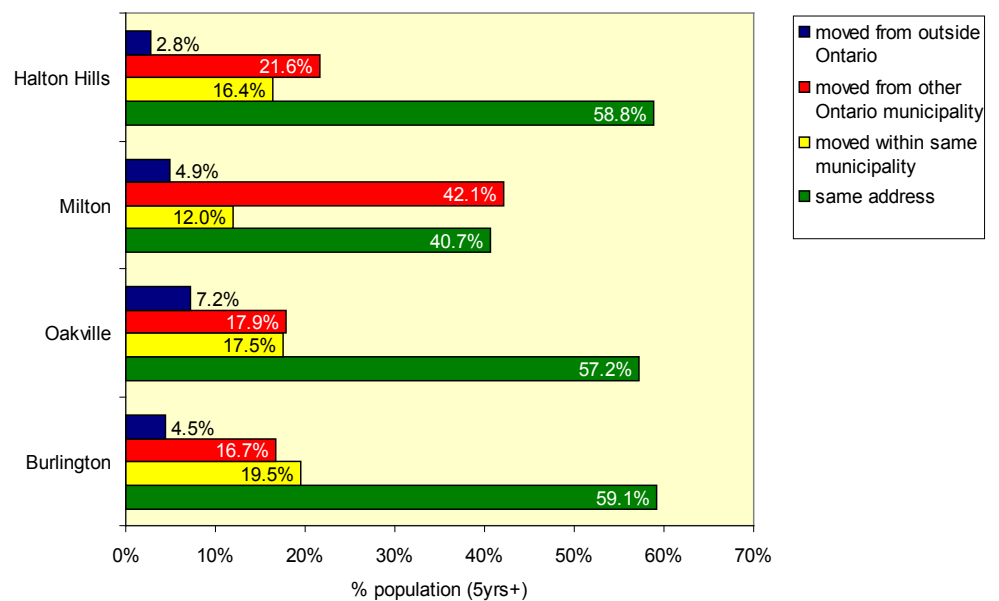
Mobility



People move for a combination of economic and non-economic reasons (i.e., family, employment, housing, education and others). Between 2001 and 2006, about four in 10 Canadians aged five and over changed residences. Overall, the Region of Halton had a similar proportion of mover population. About half (48%) of the movers moved from another municipality within the province. Almost 40% moved within their municipality of residence. About 9% moved from another country. Residents in the Town of Oakville, City of Burlington and Town of Halton Hills share this similar pattern of mobility.

The residents of Milton, who live in the fastest growing municipality in Canada, have a different mobility pattern. Only in the Town of Milton did movers outnumber non-movers (those who lived at the same address during the five year period). Between 2001 and 2006, about six in 10 residents changed residences. Of the 29,000 movers, about 20% moved within Milton (12% of the population aged 5 and over). About 70% of the movers came from another municipality within the province (about 42% of the population).

Mobility of Residents (2001-2006), Region of Halton



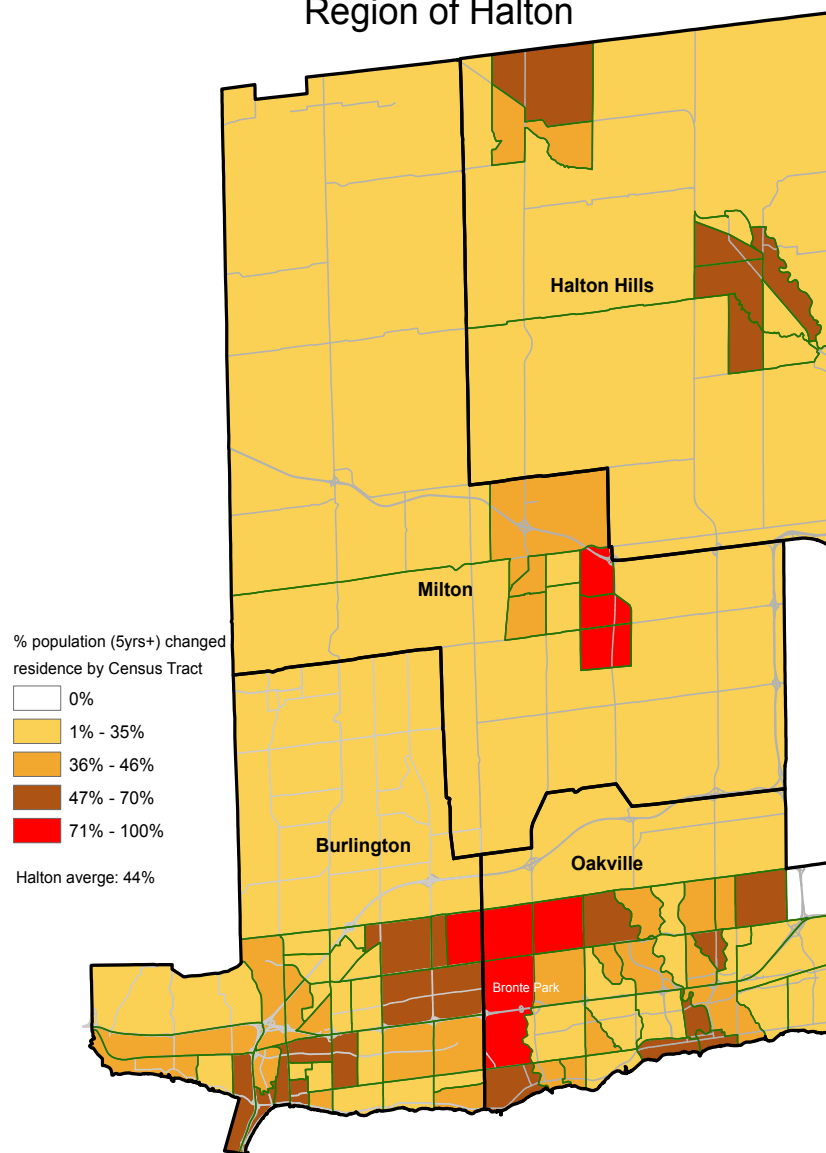
Source: Statistics Canada, 2006 Census

Mover Population

The map shows the proportion of the mover population in Halton by census tract. A census tract as established by Statistics Canada is a relatively permanent area with a population range of 2,500 to 8,000 and the greatest possible social and economic homogeneity.

As expected, areas with recent residential development had a high proportion of movers (shaded in red). Although the census tract that contains Bronte Creek Provincial Park in Oakville recorded a high proportion of movers, it was inhabited by fewer than 50 residents. There are also many areas with mover population above the average (44%). On the other hand, areas with a low percentage of movers (shaded in light brown) can be considered as more established areas.

Mover Population (2001-2006)
Region of Halton



Source: Statistics Canada, 2006 Census, DMTI Spatial

© 2008 Community Development Halton, all rights reserved.



A United Way Agency



Community Development Halton
860 Harrington Court
Burlington, ON L7N 3N4
905-632-1975

www.cdhalton.ca