

Population Change by Census Tract (2006-2011)

Community Lens #74 provides a glance at the population change between 2006 and 2011 in Halton Region and its local municipalities. It reveals a region with significant growth, although the growth is not uniformly distributed within each local municipality. The most significant growth has been in the Town of Milton, which is the fastest growing community in Canada. The geographical distribution of the population change is important to organizations such as government agencies, school boards, social service organizations and businesses. It points to the whereabouts of potential new clients, students or customers which can impact on the organization's operation, service planning and delivery processes.



This Lens looks at the population change more closely at a lower level of geography (Census Tract¹). In 2006, there were 94 Census Tracts (CTs) in Halton Region. As a result of the region's population growth, 14 new CTs have been added in the 2011 Census. Most of the new CTs are created by splitting existing ones which have exceeded the population range of a census tract.

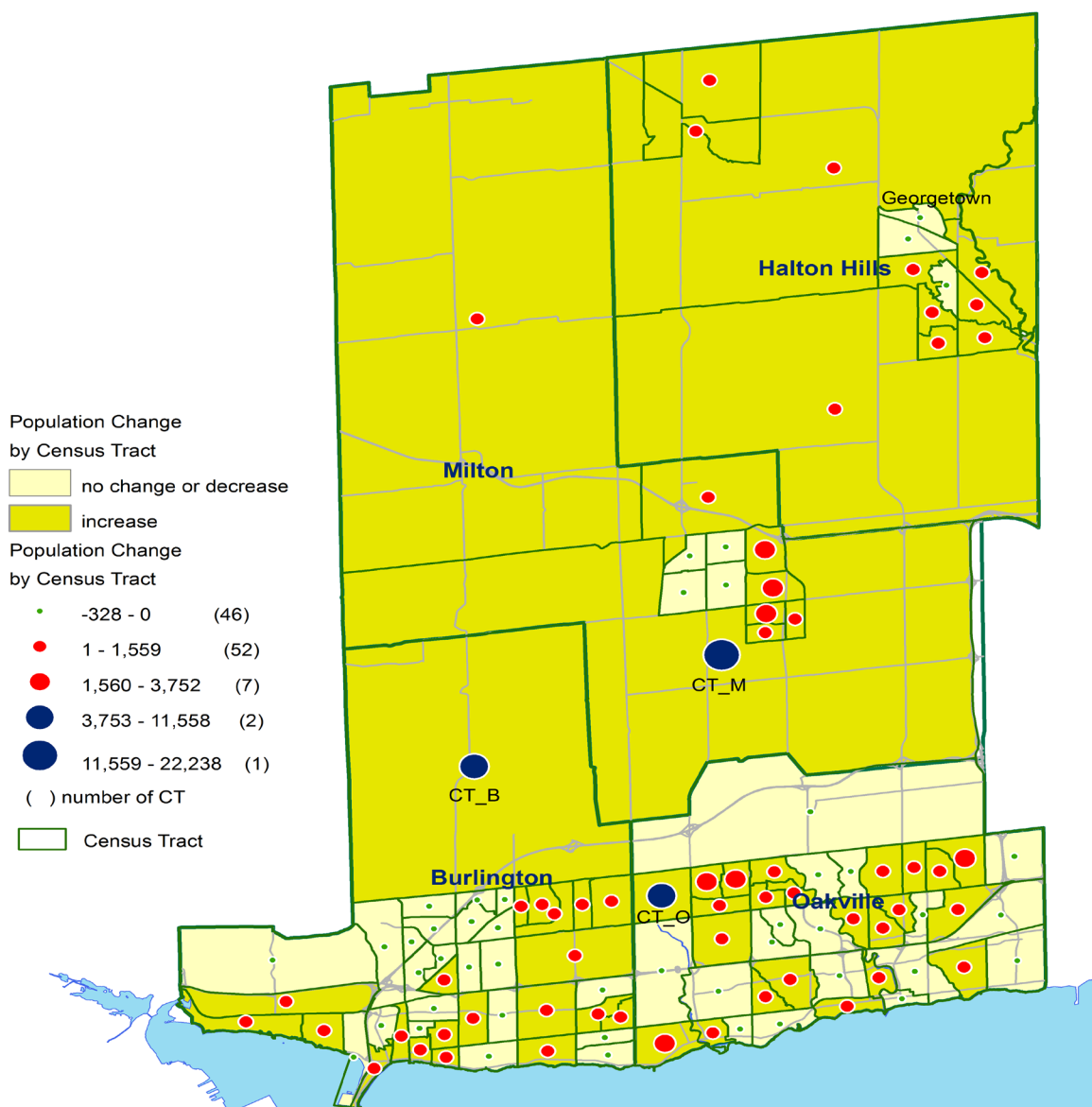
Municipality	Number of Census Tract	
	2006 Census	2011 Census
Town of Oakville	35	40
City of Burlington	38	43
Town of Milton	10	12
Town of Halton Hills	11	13
Total	94	108

The map on the following page displays the changes among the CTs in Halton. Among the 62 CTs experiencing population growth, the increase (blue circles) in three CTs is significant. Collectively, they account for over half (52%) the region's increase. In the Milton, the highest growth CT (CT_M) with a population increase of over 22,000 persons captures over 70% of the town's population increase between 2006 and 2011. Similarly, in Burlington, CT_B gained more than 7,000 persons represents 65% of the city's population growth. However, in the Oakville, the growth is distributed among many CTs, the highest growth CT (CT_O) accounts for less than 25% of the town's overall increase.

¹ A Census Tract (CT) is a relatively permanent area with a population range of 2,500 to 8,000 and the greatest possible social and economic homogeneity.

Amid the overall population increase, there are areas within each municipality which experienced no growth or had a population decrease. In comparison with the population increase, the magnitude of the decrease is less significant. These areas (shaded in yellow) account for over 40% of the region's 108 CTs. The majority (85%) of the negative growth CTs are located in the Oakville and the Burlington. There are four CTs in the Milton and three CTs in Georgetown in Halton Hills that experienced a population decrease (green circles).

Population Change (2006-2011) Region of Halton



Source: Statistics Canada, 2011 Census

© 2012 Community Development Halton, all rights reserved



Community Development Halton would like to acknowledge the ongoing financial support of the Regional Municipality of Halton.



Community Development Halton
860 Harrington Court
Burlington, ON L7N 3N4
905-632-1975

www.cdhalton.ca