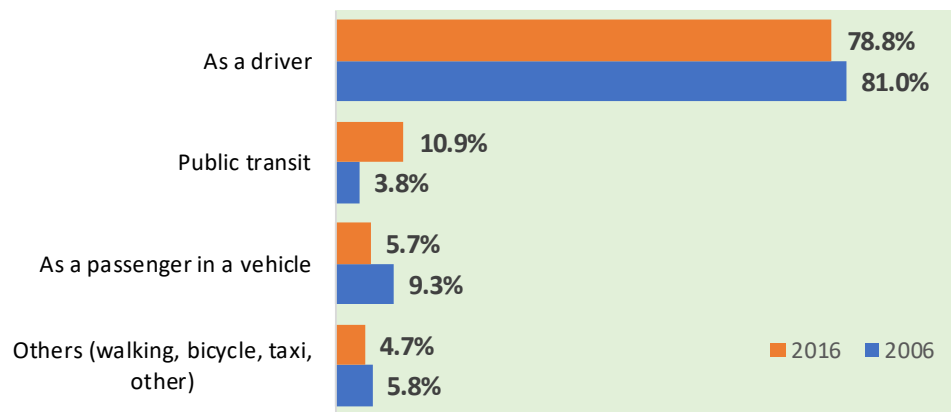


## Journey to Work, 2016

Despite that most of us still use the automobile to commute to work, many people are switching to other modes of transportation such as public transit, walking, bicycling, and carpooling. For example, across the nation, the proportion of transit commuters has increased from 10.1% in 1996 to 12.4% in 2016. This is an increase of over 346,000 transit riders. There are many factors resulting in the increase such as the cost of driving, availability of parking, traffic congestion, availability of public transit, population and employment density, etc.

This trend is also emerging in Halton. Almost 11% of the commuters are riding a bus and/or commuter train to work compared to less than 4% a decade ago. Oakville has the highest percentage of 17% followed by Burlington at 9%, Milton at 8.2% and Halton Hills at 3.6%.

### Proportion of Commuters by Mode of Transportation, Halton Region, 2006-2016



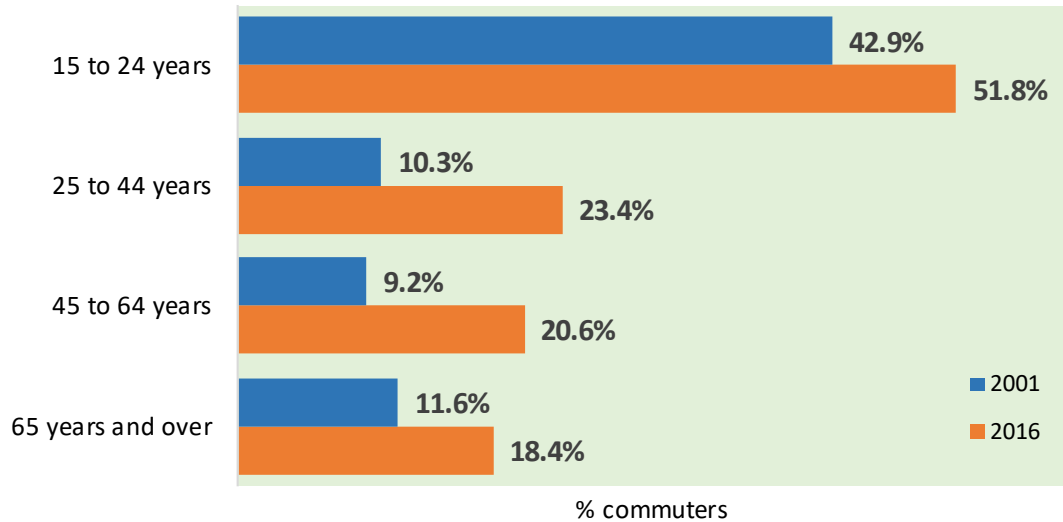
Community Development Halton/Source: Statistics Canada, 2006, 2016 Censuses

Transportation modes such as public transit, walking, bicycling and carpooling are considered sustainable transportation. According to Statistics Canada, carpooling is included in this category because it represents fewer cars on the road and smaller per capita environmental impact than driving alone.<sup>1</sup>

In Halton, the proportion of commuters using sustainable transportation rose from 19% in 2001 to 21.2% in 2016. That is more than one in five commuters. The increase in using sustainable transportation is evident across all age groups. In 2016, over half (51.8%) of the youth (15 to 24 years) commuters used a form of sustainable transportation to go to work. About 19% of seniors did not drive alone to work.

<sup>1</sup> Statistics Canada, Census in Brief, *Commuters using sustainable transportation in census metropolitan areas*, November 29, 2017

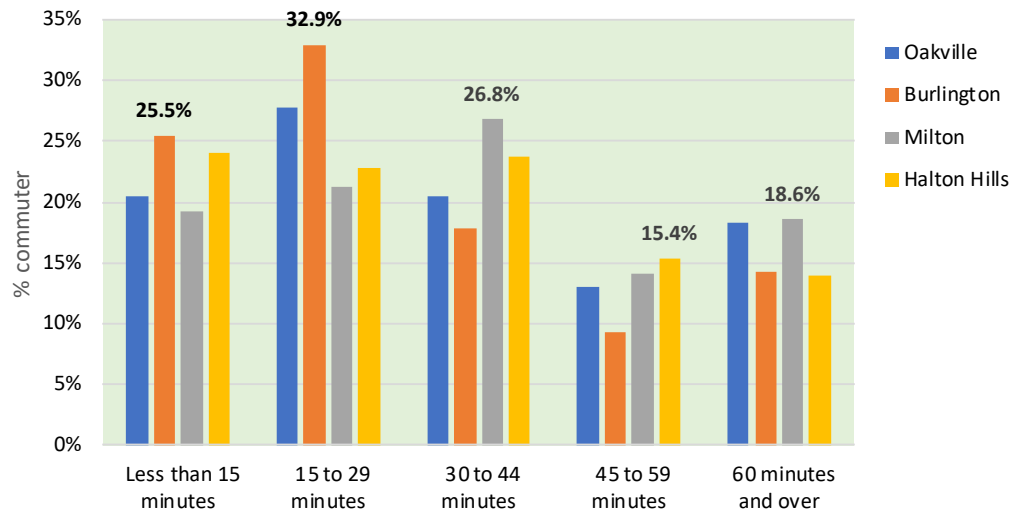
## Proportion of Commuters Using Sustainable Transportation by Age Group Halton Region, 2001, 2016



Community Development Halton/Source: Statistics Canada, 2001, 2016 Censuses

In general, the distance and the mode of transportation determine the amount of commuting time (commuting duration). Burlington commuters have shorter travel time than their counterparts in the other three municipalities. For example, almost 60% of Burlington commuters spent less than half an hour going to work compared to 40% for Milton, 47% for Halton Hills, and 48% for Oakville. On the other hand, over 18% of commuters from both Oakville and Milton have to travel over an hour to work compared to 14% from Burlington.

## Commuting Duration, Halton Region, 2016



Community Development Halton/Source: Statistics Canada, 2016 Census



Community Development Halton would like to acknowledge the ongoing financial support of the Regional Municipality of Halton.



Community Development Halton  
3350 South Service Road  
Burlington, ON L7N 3M6  
905-632-1975

[www.cdhalton.ca](http://www.cdhalton.ca)